

## Gouda 48% - tranches - 6x66x15g - 2 pile - 15x5cm

ID de version	1272
Date de publication	21-02-2025
Page	1 / 5
Numéro de produit	10001272



### EAN

EAN paquet	08710306907607
EAN carton	08710306976009

### Général

Code marchandise	04069078
Format	6x66x15 gram / 15x5 cm
Cartons par palette	45
Dimensions tranche (cm)	5x15cm
Dimensions emballage (mm)	355 x 260 x 22
Poids net UC (g)	1000
Tare UC (g)	37
Dimensions UN (mm)	0x0x0
Atmosphère protectrice	60% CO2 / 40% N2
Oxygène résiduelle	< 3%
D.L.U.O. (jours)	84
Les conditions de conservation	2 - 7°C

### Ingrédients

LAIT pasteurisé	97,77 %
sel	1,71 %
ferments lactiques	< 1 %
coagulant microbien	< 1 %

### Liste d'ingrédients

LAIT pasteurisé, sel, ferments lactiques, coagulant microbien

## Gouda 48% - tranches - 6x66x15g - 2 pile - 15x5cm

ID de version	1272
Date de publication	21-02-2025
Page	2 / 5
Numéro de produit	10001272



### Données Microbiologiques

Enterobacteriaceae	<1000 cfu/g
E.coli	<100 cfu/g
Coag.pos.Staphylococcen	<100 cfu/g
Levure/Moisissure	<100000 / <5000 cfu/g
Listeria monocytogenes	neg. /25g
Salmonella	neg. /25g

### Allergènes

Gluten	-	Fruits à coques	-
Crustacés	-	Céleri	-
Oeuf	-	Moutarde	-
Poisso	-	Grains de sésame	-
Arachides/ cacahuètes	-	Dioxyde de soufre et sulfites (E220-E228)	-
Soja	-	Lupin	-
Lait	+	Mollusques	-

### Valeurs nutritionnelles pour 100g

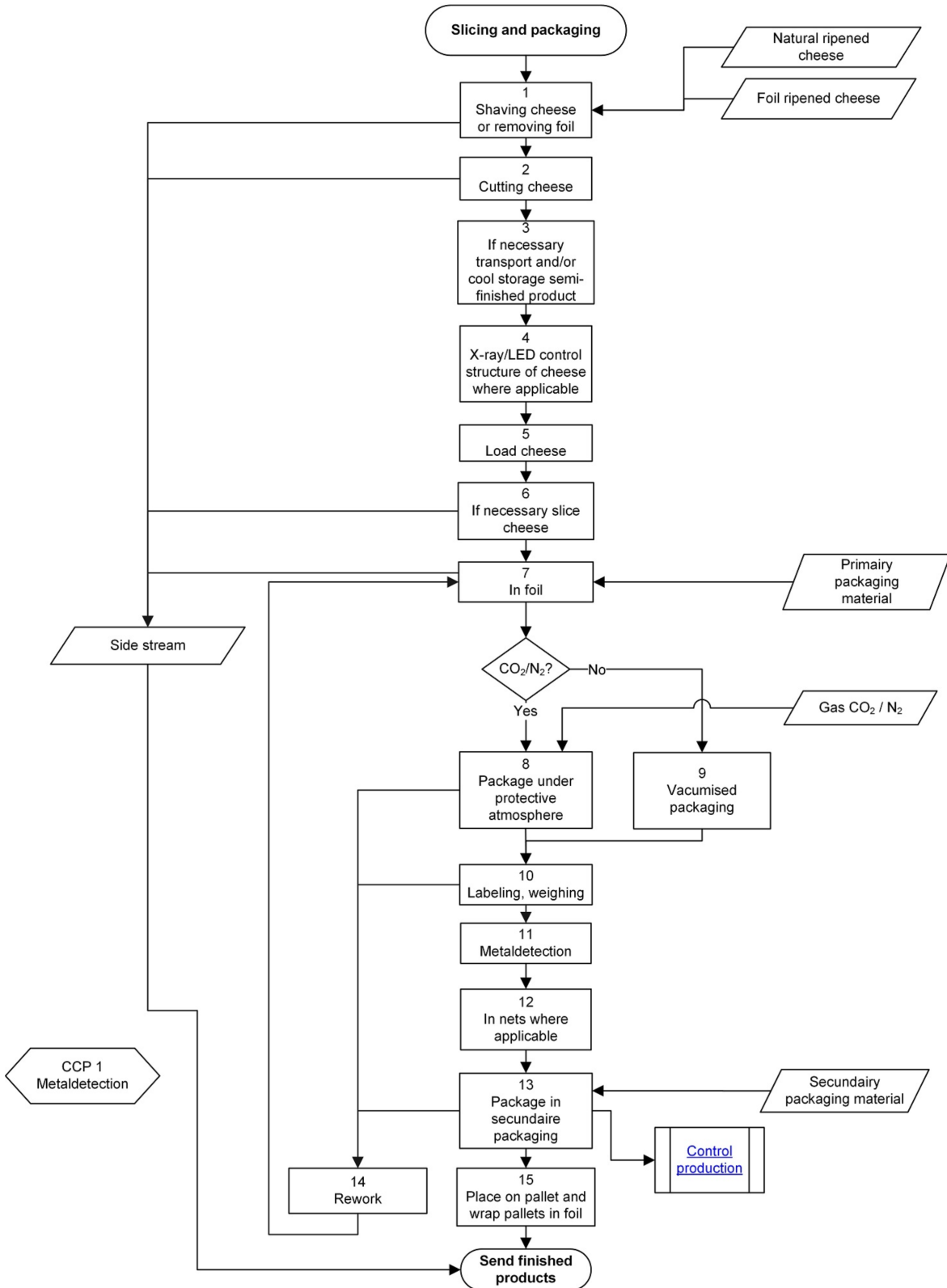
Energétique (kJ)	1434 kJ
Energétique (kcal)	343 kcal
Matières grasses	27,9 g
Acides gras saturés	19,4 g
Acides gras mono-insaturés	7,7 g
Acides gras polyinsaturés	0,8 g
Cholestérol	89 mg
Acides gras trans	0,7 g
Glucides	0,0 g
Sucres	0,0 g
Fibre alimentaire	0,0 g
Protéines	23,6 g
Sel	1,7 g
Sodium	0,7 g
Calcium	0,8 g
Eau	43,0 g
pH	5,3
Cendre	5,5 g

### Autorisation

Nom:	K. Kruyswijk
Département:	Q.A.

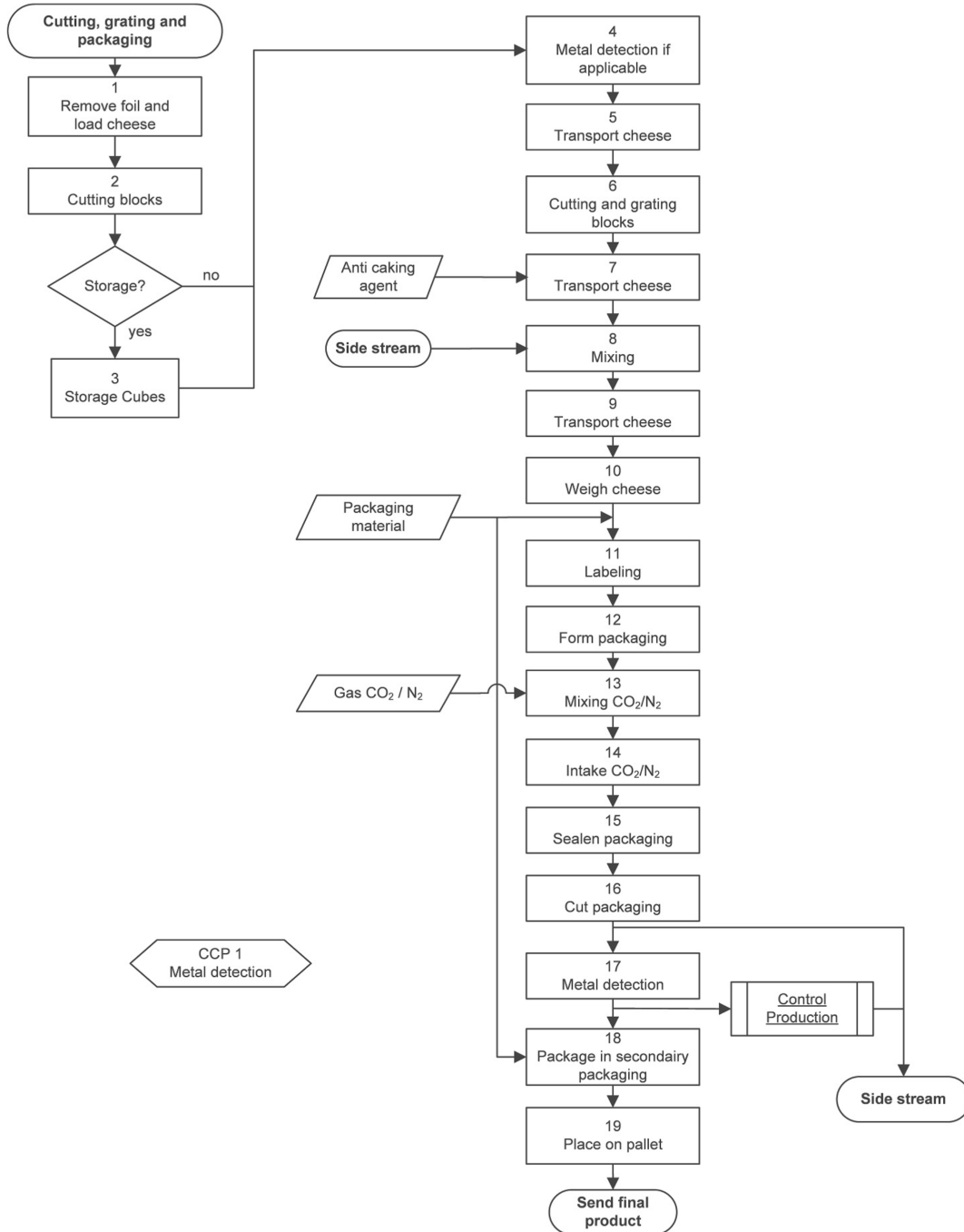
# Gouda 48% - tranches - 6x66x15g - 2 pile - 15x5cm

ID de version 1272  
 Date de publication 21-02-2025  
 Page 3 / 5  
 Numéro de produit 10001272



# Gouda 48% - tranches - 6x6x15g - 2 pile - 15x5cm

ID de version 1272  
 Date de publication 21-02-2025  
 Page 4 / 5  
 Numéro de produit 10001272



## Gouda 48% - tranches - 6x66x15g - 2 pile - 15x5cm

ID de version	1272
Date de publication	21-02-2025
Page	5 / 5
Numéro de produit	10001272



### Hygiene and foodsafety

This product is in accordance with regulations (EU) 178/2002, (EU) 852/2004, (EU) 853/2004 and regulation (EU) 2073/2005

### Labeling and claims

This product is in accordance with regulations (EU) 1169/2011 and (EU) 1924/2006

### Gluten

This product is gluten-free conform regulation (EU) 828/2014

### GMO

This product is GMO-free conform regulation (EU) 1829/2003 and regulation (EU) 1830/2003

### Contaminants and residues

This product is in accordance with regulations (EU) 1881/2006, (EU) 396/2005, (EU) 470/2009, (EU) 37/2010 and its amendments concerning contaminants, residues of pesticides or veterinary products.

### Radiation

This product is not exposed to radiation in accordance with directives (EU) 1999/2 and (EU) 1999/3.

### Radioactivity

This product is in accordance with EU regulation (Euratom) No. 2016/52 and its amendments.

### Nanoparticles

We hereby guarantee the absence of nanoparticles in our products and its ingredients.


### Primary packaging material


Primary packaging material is plastic. We hereby declare that our primary packaging material is in accordance with:

- European regulation (EU) 1935/2004
- European regulation (EU) 10/2011 of 14 January 2011 and amendments
- European regulation (EU) 2023/2006 on good manufacturing practice for materials and articles intended to come into contact with food

Vepo Cheese, location Bodegraven

Vepo Cheese, location Oudewater

EC approval: 

EC approval: 

Quality certificates:

Download certificates at [www.vepocheese.com](http://www.vepocheese.com)