

## TEST REPORT

**APPLICANT** : SIER DISPOSABLES BV

**ADDRESS** : KRYPTONSTRAAT 8, 6718 WR. EDE. THE NETHERLANDS

**SAMPLE DESCRIPTION** : PICKS

**STYLE / ITEM NO.** : 31015, 31017, 31019, 31021, 31023, 31025, 31027, 31029, 31031, 31033, 31043, 31050, 31052, 31054, 31060, 31062, 31005, 31007, 31009, 31070, 31072, 31042, 31044, 31045, 31046, 31047, 31049, 31120

**COLOR** : BAMBOO AND BLACK

**COUNTRY OF ORIGIN** : CHINA

**COUNTRY OF DESTINATION** : THE NETHERLANDS

**SAMPLE RECEIVED DATE** : SEP. 23, 2014

**TEST PERIOD** : SEP. 23, 2014 TO OCT. 08, 2014

**RESULT SUMMARY** : PLEASE REFER TO NEXT PAGE(S)

\*\*\*\*\*FOR FURTHER DETAILS, PLEASE REFER TO THE FOLLOWING PAGE(S)\*\*\*\*\*

SIGNED FOR AND ON BEHALF OF  
EUROFINS TESTING TECHNOLOGY (SHENZHEN) CO. LTD.



Harry Chen  
Inorganic Team Supervisor



Coco Luo  
Organic Team Supervisor



This test report is valid for the tested samples only. Without permission of the test center this test report is not permitted to be duplicated in extracts.  
This test report does not entitle to carry any safety mark on this or similar products.

**RESULT SUMMARY**

TEST REQUESTED	RESULT
Selected tests for the suitability for contact with foodstuffs with reference to the Regulation (EC) No 1935/2004:	-
- Global migration refer to Regulation (EU) No 10/2011.	PASS
- Specific Migration of Heavy metals refer to Regulation (EU) No 10/2011.	PASS
- Specific Migration of BADGE, BFDGE & NOGE according to Directive 1895/2005/EC	PASS
- Specific Migration of Formaldehyde	Please refer to next page(s).
- Pentachlorophenol	Please refer to next page(s).
- Total Arsenic Content according to Entry 19 of Regulation (EC) No 552/2009 amending Annex XVII of REACH Regulation (EC) No 1907/2006	PASS
- Cadmium after total digestion according to Entry 23 of Annex XVII to Regulation (EC) No 1907/2006 and its amendments Regulation (EC) No 552/2009, (EU) No 494/2011 and (EU) No 835/2012	PASS

TO BE CONTINUED

**Test Result:**
**Global migration**

The migratory behaviour is examined in accordance with the Regulation (EU) No 10/2011. Deviating to the regulations the following tests were performed as orientating single tests.

Test condition :

Food simulant	Test duration/temperature
3% Acetic acid	1 hours / 40°C

Test Sample		Brown bamboo with black coating	Detection limit	Limit
Parameter	Unit	Test result		
3% Acetic acid	mg/dm <sup>2</sup>	4.7	2	10

Note: - mg/dm<sup>2</sup> = milligram per square decimetre  
 - °C = degree Celsius  
 - N.D. = Not Detected

- Refer to the Regulation (EU) No 10/2011, material with contact to food may not transfer more than 10 mg/dm<sup>2</sup> of substance (global migration).

- On materials or articles intended to come into repeated contact with foodstuffs the global migration shall be carried out up to 3 times with the same sample, unless already the 1<sup>st</sup> or 2<sup>nd</sup> migration test proof negative.

**Specific Migration of Heavy metals**

The concentration of the following elements is examined by means of inductively coupled plasma spectroscopy.

Limit refer to Regulation (EU) No 10/2011.

Test condition :

Food simulant	Test duration/temperature
3% Acetic acid	1 hours / 40°C

Test Sample		Brown bamboo with black coating	Detection limit	Limit
Parameter	Unit	Test result		
Barium (Ba)	mg/kg	N.D.	0.1	1
Cobalt (Co)	mg/kg	N.D.	0.01	0.05
Copper (Cu)	mg/kg	N.D.	0.1	5
Iron (Fe)	mg/kg	N.D.	1	48
Lithium (Li)	mg/kg	N.D.	0.1	0.6
Manganese (Mn)	mg/kg	N.D.	0.1	0.6
Zinc (Zn)	mg/kg	N.D.	1	25

Note: - 1 mg/kg = 1 ppm = 0.0001%  
 - °C = degree Celsius  
 - < = less than

TO BE CONTINUED

**Specific Migration of BADGE, BFDGE & NOGE**

Test method                      Bisphenol-A Diglycidyl Ether (BADGE) and some of its derivatives:  
 Refer to EN 15136:2006.  
 Bisphenol-F Diglycidyl Ether (BFDGE): Refer to EN 15137:2006.  
 Novolac Glycidyl Ethers (NOGE): Refer to EN 15137:2006.

Limit according to Directive 1895/2005/EC.

Test condition                      :

Food simulant	Test duration/temperature
3% Acetic acid	1 hours / 40°C

Test Sample			Brown bamboo with black coating	Detection limit	Limit
Parameter	CAS No.	Unit	Test result		
BADGE and some of its derivatives	-	mg/6 dm <sup>2</sup>	N.D.	0.06	(^)
BFDGE	039817-09-9	mg/6 dm <sup>2</sup>	N.D.	0.06	N.D.
NOGE	-	mg/6 dm <sup>2</sup>	N.D.	0.06	N.D.

Note: - mg/6 dm<sup>2</sup> = milligram per 6 square decimetre

- °C = degree Celsius

- N.D. = Not Detected

- (^) According to Directive 1895/2005/EC, the permissible limit of BADGE is as follow:

Parameter	CAS No.	Limit According to Directive 1895/2005/EC
(a) BADGE	001675-54-3	<b>Sum: 9 mg/6 dm<sup>2</sup></b>
(b) BADGE.H <sub>2</sub> O	076002-91-0	
(c) BADGE.2H <sub>2</sub> O	005581-32-8	
(a) BADGE.HCl	013836-48-1	<b>Sum: 1 mg/6 dm<sup>2</sup></b>
(b) BADGE.2HCl	004809-35-2	
(c) BADGE.H <sub>2</sub> O.HCl	227947-06-0	



### Specific Migration of Formaldehyde

Test condition :

Food simulant	Test duration/temperature
3% Acetic acid	1 hours / 40°C

Test Sample		Brown bamboo	Detection limit
Parameter	Unit	Test result	
Formaldehyde	mg/dm <sup>2</sup>	N.D.	1

 Note: - mg/dm<sup>2</sup> = milligram per square decimetre

- °C = degree Celsius

- N.D. = Not Detected

### Pentachlorophenol

Test method : With reference to 64 LFGB B 82.02-8:2001.

Test Sample		Brown bamboo	Detection limit
Parameter	Unit	Test result	
Pentachlorophenol (PCP)	mg/kg	N.D.	0.1

Note: - 1 mg/kg = 1 ppm = 0.0001%

- N.D. = Not Detected

### Total Arsenic Content

Test method : EPA 3052: 1996, EPA 6010C: 2007.

Limit : N.D. – according to Entry 19 of Regulation (EC) No 552/2009 amending Annex XVII of REACH Regulation (EC) No 1907/2006

Test Sample		Brown bamboo	Detection limit
Parameter	Unit	Test result	
Arsenic (As)	mg/kg	N.D.	1

Note: - 1 mg/kg = 1 ppm = 0.0001%

- N.D. = Not Detected

TO BE CONTINUED

**Cadmium after total digestion**

Contents of cadmium are regulated for products with plastic parts according to Entry 23 of Annex XVII to Regulation (EC) No 1907/2006 and its amendments Regulation (EC) No 552/2009, (EU) No 494/2011 and (EU) No 835/2012.

Test Sample		Brown bamboo with black coating	Detection limit	Limit
Parameter	Unit	Test result		
Cadmium (Cd)	mg/kg	N.D.	10	100

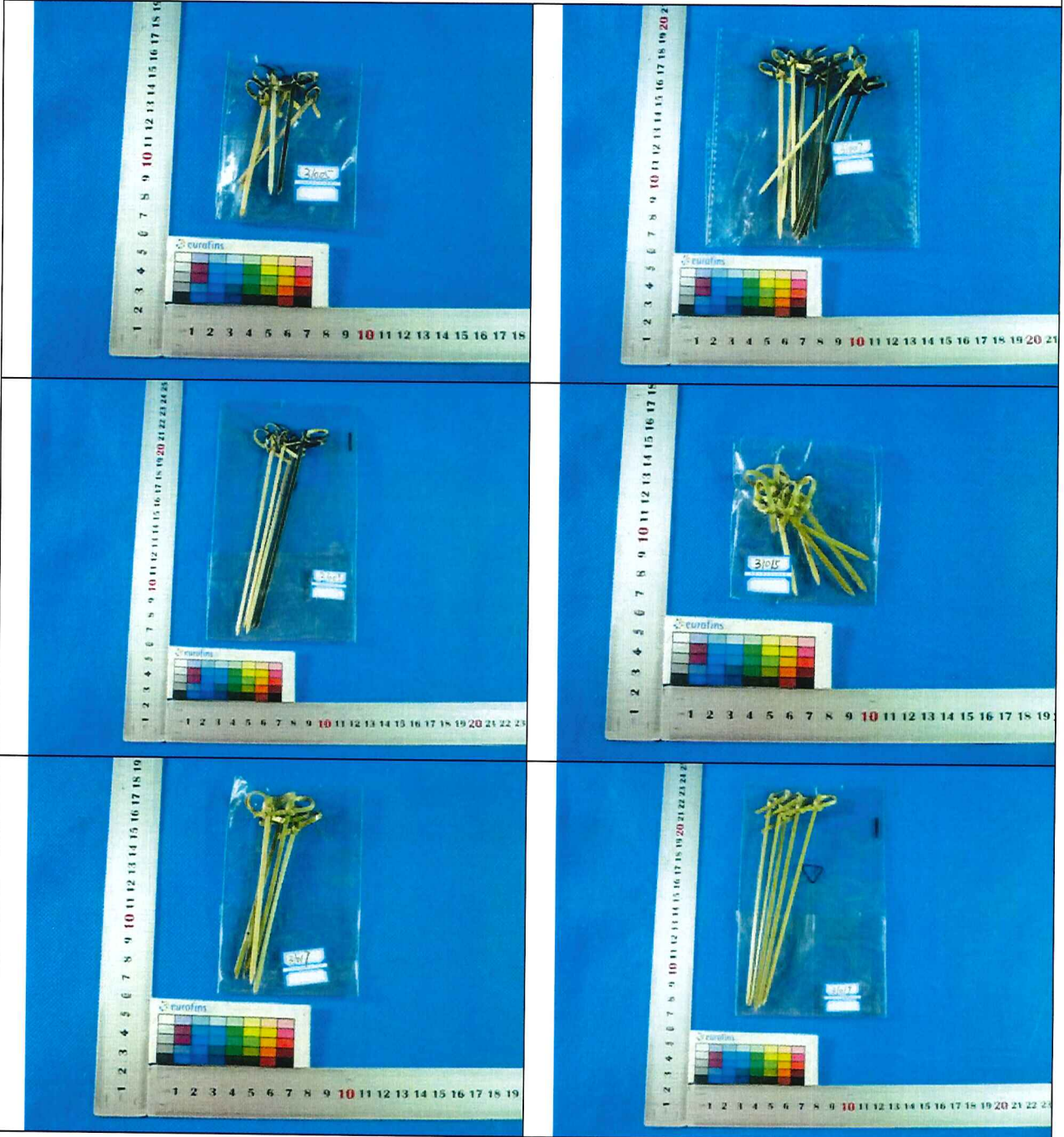
Note: - 1 mg/kg = 1 ppm = 0.0001%

- N.D. = Not Detected

**Other Information / Remark:**

- According to the customer's requirement, the appointed test sample, condition and simulant have been selected.

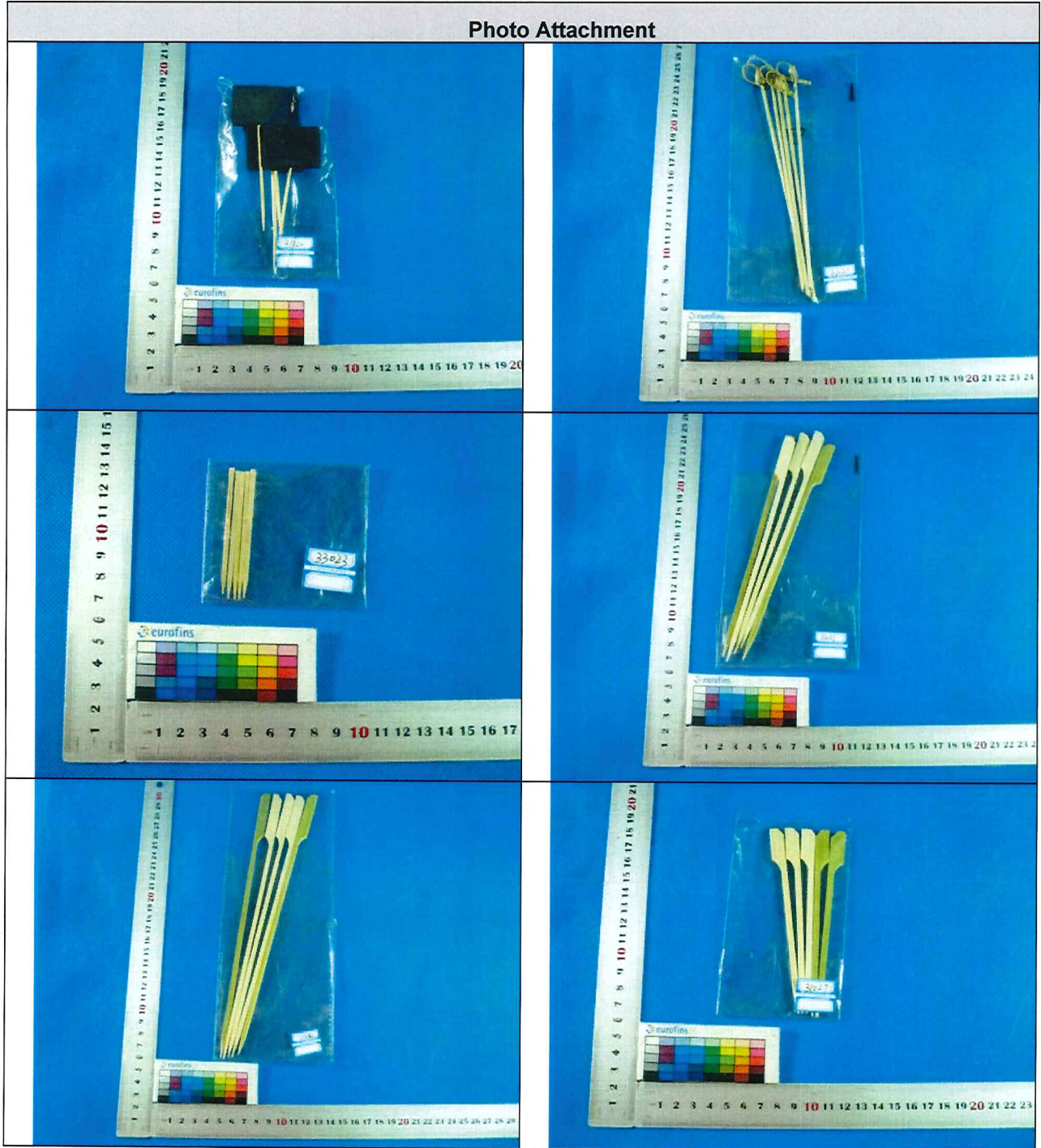
Photo Attachment  
PICKS



TO BE CONTINUED



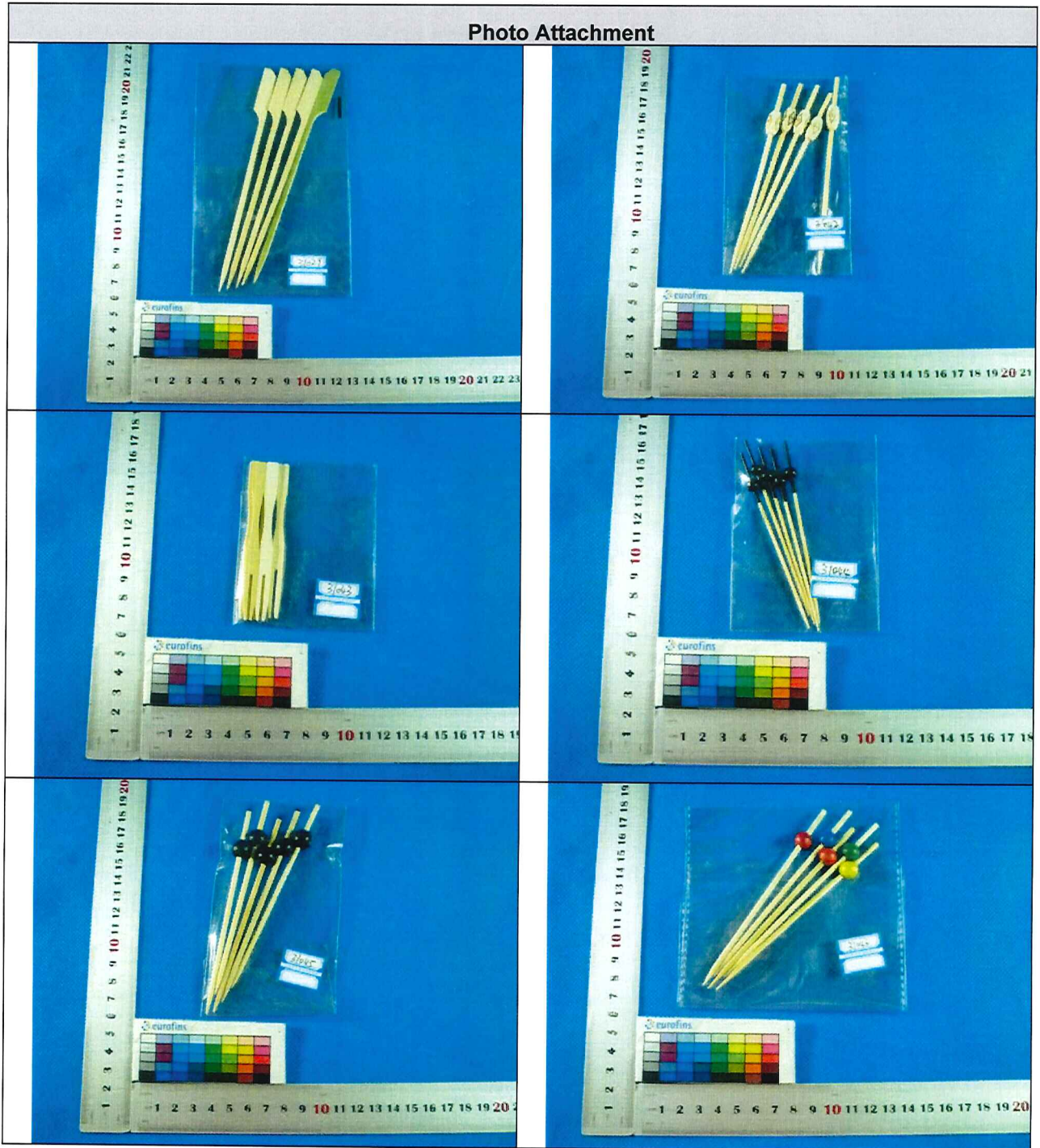
Photo Attachment



TO BE CONTINUED

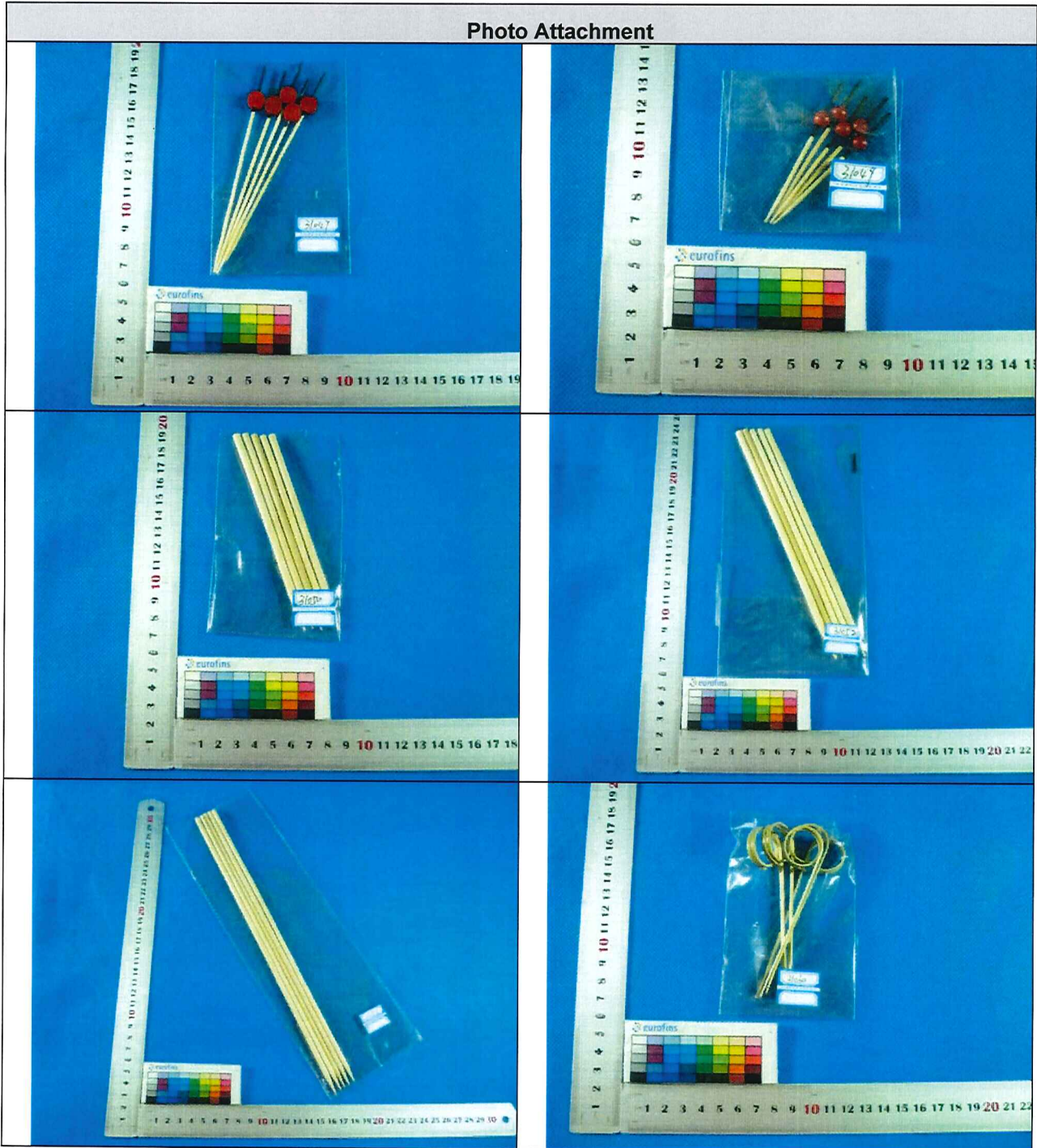


Photo Attachment



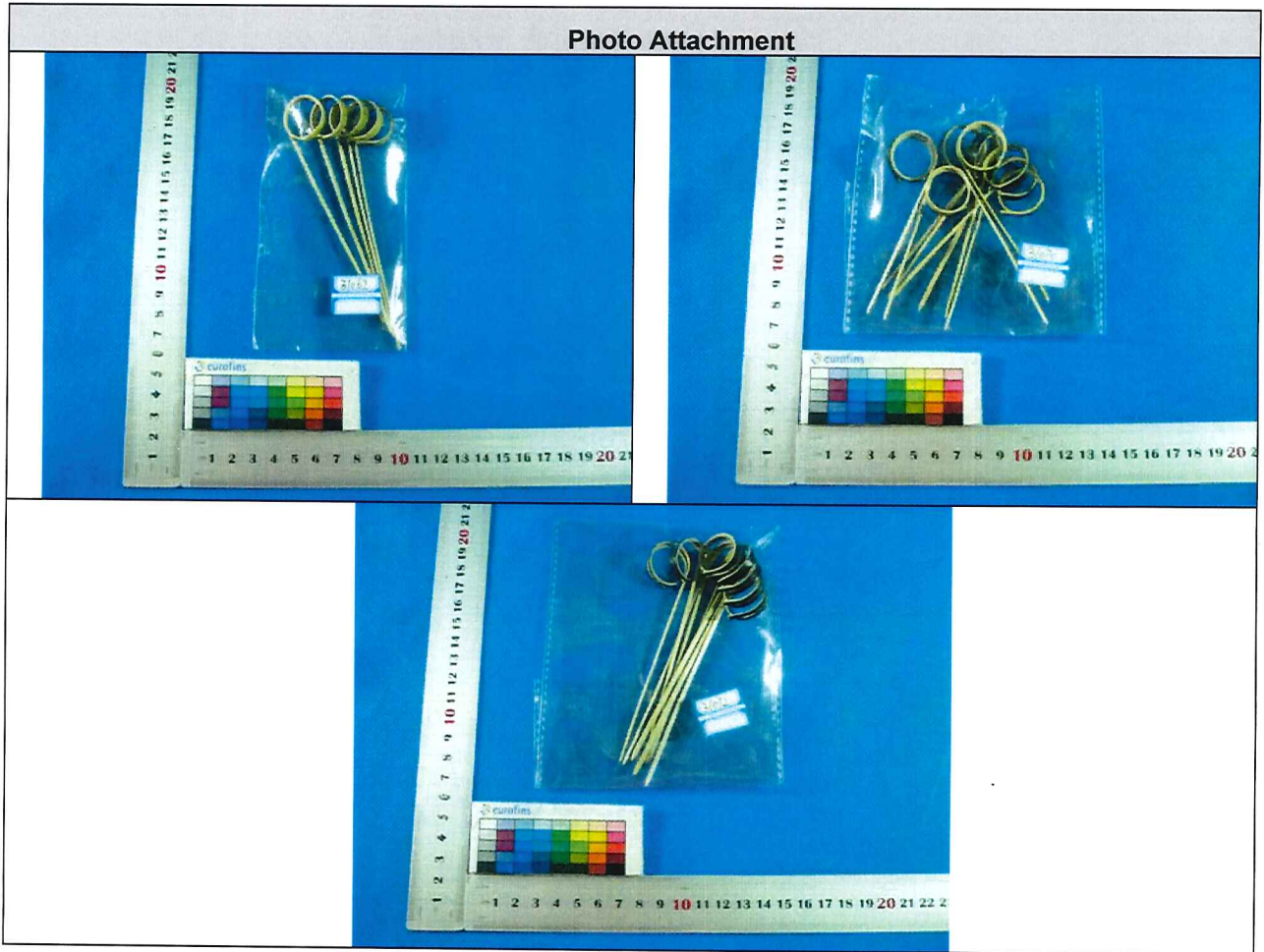
TO BE CONTINUED

Photo Attachment



TO BE CONTINUED





\*\*\*END OF THE REPORT\*\*\*